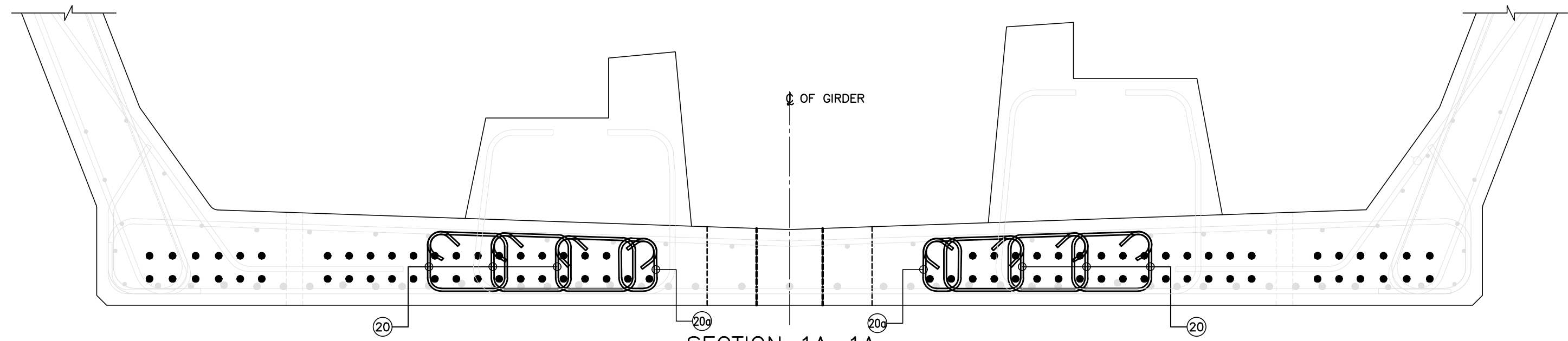
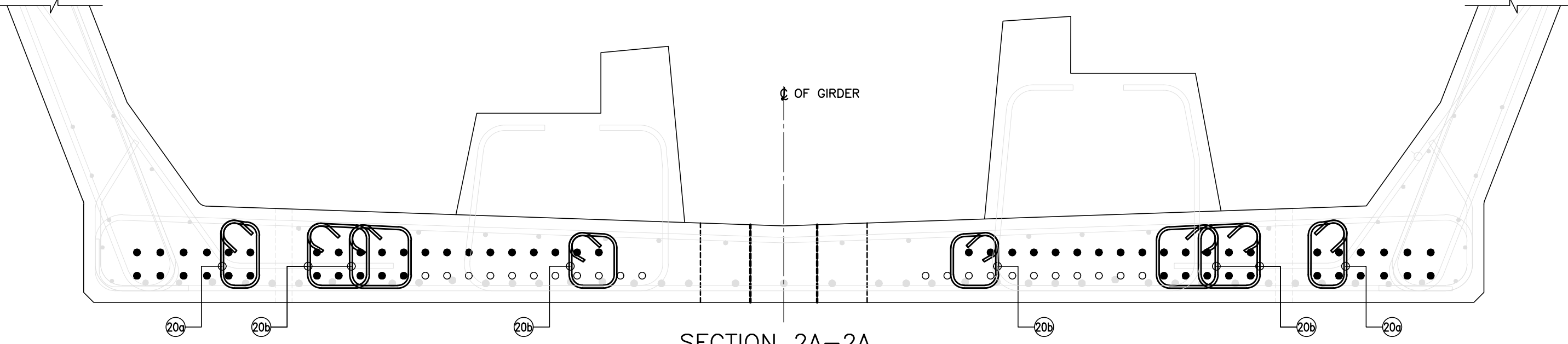


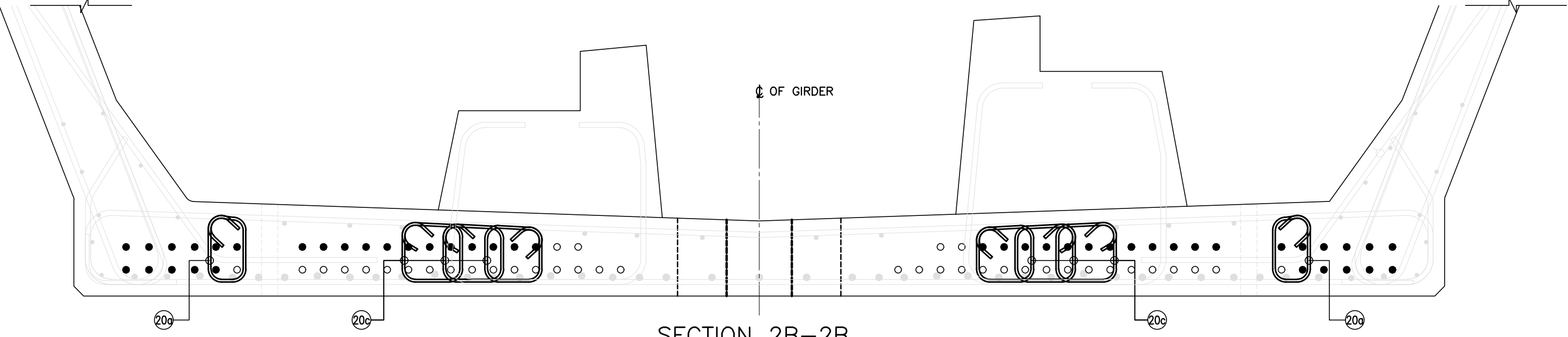
PLAN - STIRRUPS REINFORCEMENT
(SCALE 1:25)
(ONLY STIRRUPS REINFORCEMENT SHOWN)



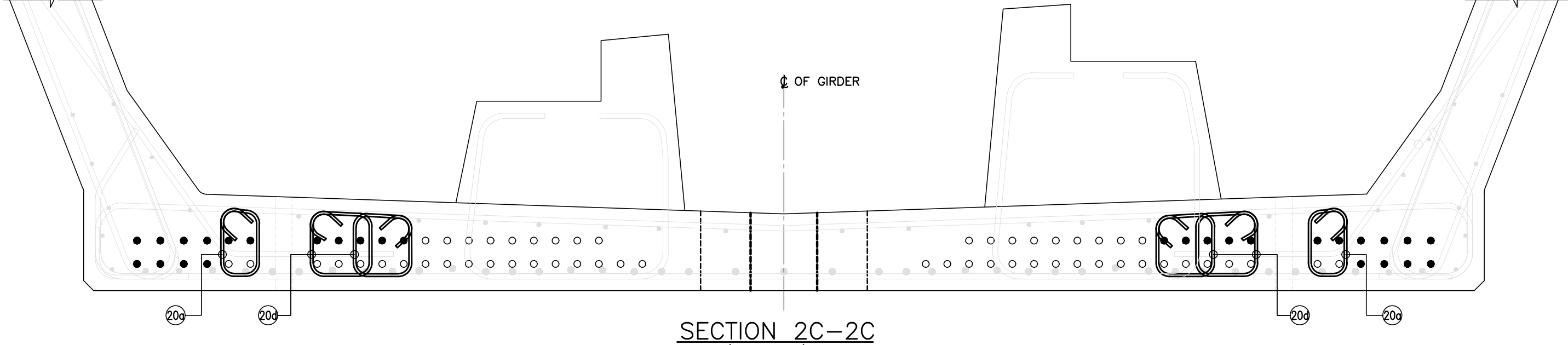
SECTION 1A-1A
(SCALE 1:12)



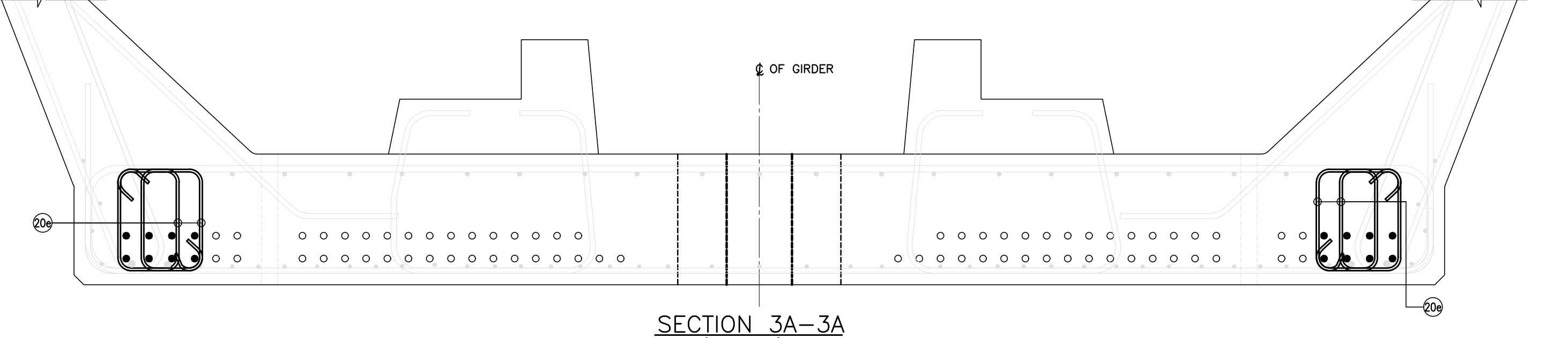
SECTION 2A-2A
(SCALE 1:12)



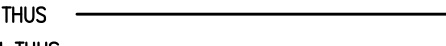

SECTION 2B-2B
(SCALE 1:12)



SECTION 2C-2C
(SCALE 1:12)



SECTION 3A-3A
(SCALE 1:12)

- NOTES:
1. ALL DIMENSIONS ARE IN MILLIMETRES, UNLESS OTHERWISE MENTIONED.
 2. DIMENSIONS ARE NOT TO BE SCALED, FOLLOW ONLY WRITTEN DIMENSIONS.
 3. ALL REINFORCEMENTS SHALL BE Fe-500 CONFORMING TO IS:1786.
 4. GRADE OF CONCRETE SHALL BE M60.
 5. MINIMUM CLEAR COVER TO ANY REINFORCEMENT SHALL BE 35mm.
 6. DEVELOPMENT LENGTH REPRESENTED BY L_d SHALL BE EQUAL TO 41 TIMES THE DIA. OF THE BAR.
 7. LAP LENGTH SHALL BE EQUAL TO 58 TIMES THE DIA. OF BAR AND NOT MORE THAN 50% OF THE BARS SHALL BE LAPPED AT A SECTION.
 8. ALL LAPS SHALL BE STAGGERED, NOT MORE THAN 50% OF REINFORCEMENT SHALL BE LAPPED AT ANY SECTION.
 9. ADEQUATE LINKS/SPACER BARS SHALL BE PROVIDED FOR PROPER POSITIONING OF REINFORCEMENT.
 10. FAR FACE BARS SHOWN THUS  NEAR FACE BARS SHOWN THUS 
 11. TRANSVERSE BARS ARE TO BE ARRANGED RADIALY, WHERE SPACING IS GIVEN THEY ARE ALONG OUTER PERIPHERY OF CURVE (MAXIMUM SPACING)
 12. DOWEL BARS FOR RAIL PLINTH AND ONE MAST PEDESTAL SHALL BE LEFT BEFORE CONCRETING.

REFERENCE DRAWINGS: (LATEST REVISION)

1. 022077-BSRP-CR2-C-VD-GEN-30-1011 - GENERAL ARRANGEMENT AND DIMENSIONAL DETAIL OF 28M CURVED SPAN SUPERSTRUCTURE (R=540M & R<770M).
2. 022077-BSRP-CR2-C-VD-GEN-30-1012 - GENERAL ARRANGEMENT AND DIMENSIONAL DETAIL OF 28M CURVED SPAN SUPERSTRUCTURE (R=540M & R<770M).
3. 022077-BSRP-CR2-C-VD-GEN-30-1013 - PRE TENSIONED STRAND DETAILS FOR 28M CURVED SPAN SUPERSTRUCTURE (R=540M & R<770M).
4. 022077-BSRP-CR2-C-VD-GEN-30-1014 - REINFORCEMENT DETAILS OF 28M CURVED SPAN SUPERSTRUCTURE (R=540M & R<770M).
5. 022077-BSRP-CR2-C-VD-GEN-30-1015 - REINFORCEMENT DETAILS OF 28M CURVED SPAN SUPERSTRUCTURE (R=540M & R<770M).
6. 022077-BSRP-CR2-C-VD-GEN-30-1016 - GAUGES AND CLEARANCES - 28 M SPAN - FOR (R=540M & R<770M) PLAN VIEW & SECTION VIEW.
7. 022077-BSRP-CR2-C-VD-GEN-30-5001 - PRE TENSIONED STRAND DETAILS FOR U-GIRDER.
8. 022077-BSRP-CR2-C-VD-GEN-30-5006 - TYPICAL DETAIL OF ANCHOR & REINFORCEMENT OF PEDESTAL & WEB OF U-GIRDER AT ONE MAST LOCATION.
9. 022077-BSRP-CR2-C-VD-GEN-30-5008 - TYPICAL REINFORCEMENT DETAILS AT LIFTING HOLE LOCATION FOR U-GIRDER.
10. 022077-BSRP-CR2-C-VD-GEN-30-5021 - PLACING OF U-GIRDER AND I-GIRDER FOR CR2 & CR4.

LICENSE:

"THIS DESIGN FOR THE PROJECT HAVE BEEN PREPARED UNDER LICENSE FROM M/S SYSTRA"

NOTES:										LEGEND:		REFERENCE DRAWINGS :				REFERENCE DOCUMENTS :				KEY PLAN				STATION BOX KEY PLAN			
1. ALL DIMENSIONS ARE IN MILLIMETRES, UNLESS OTHERWISE MENTIONED.																											
2. DIMENSIONS ARE NOT TO BE SCALED, FOLLOW ONLY WRITTEN DIMENSIONS.																											